

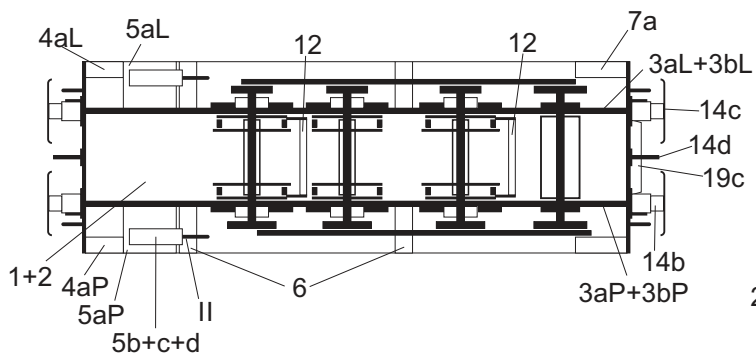
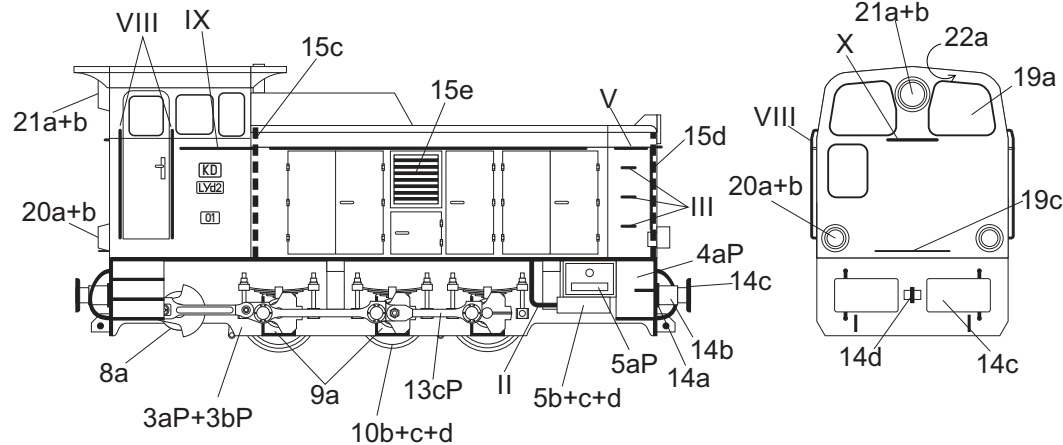
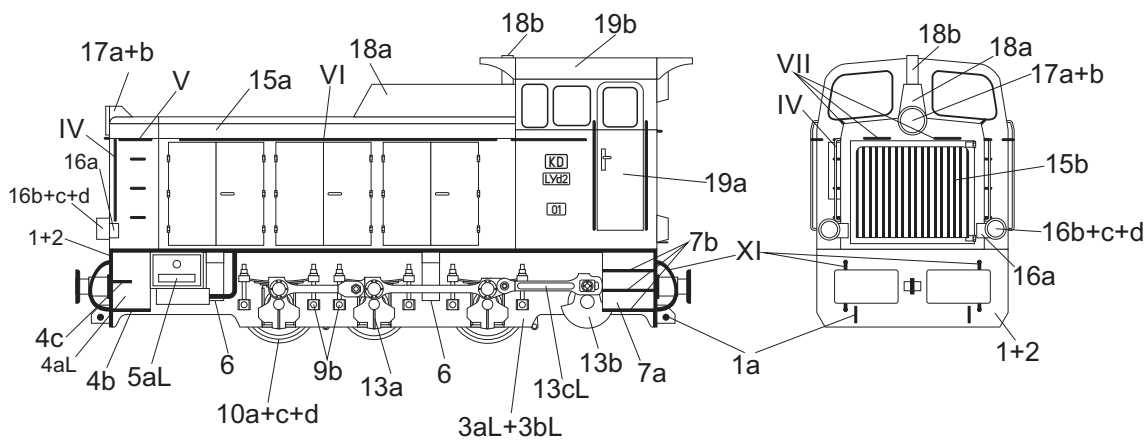
# KD-Lyd2-01

## KWK Centrum (dawniej Dymitrow; 785mm)

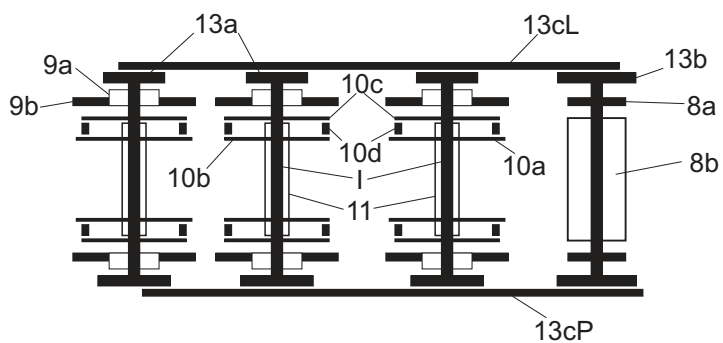
The image displays a comprehensive paper model template for the KD-Lyd2-01 locomotive. The parts are organized into several sections:

- Locomotive Body and Front:** Includes large panels for the body (15a-15e), front view (19a), and side view (19b, 19c). Smaller panels (16a-16d, 17a-17b, 18a-18b) define the locomotive's profile and roof.
- Wheels and Axles:** Features circular wheel templates (10a-10d) and axle components (11, 12).
- Internal Mechanisms:** Shows detailed templates for the locomotive's interior, including the boiler (22a-22b) and various mechanical parts (23a-23d, 24a-24b, 25a-25b, 26a-26b, 27a-27b).
- Decorative and Identification Elements:** Part 1 has a red and white chevron pattern. Part 2 contains the text "Lyd2 Sebastian Kiszka www.gkw.tw53.webd.pl". Part 13c is a solid red panel, and part 14a is a solid black panel.
- Assembly Details:** Numerous small circular and rectangular components (e.g., 13a-13b, 13cL-13cP, 14a-14d, 15, 16, 17, 18, 19, 20, 21, 22, 23, 24, 25, 26, 27) are shown for precise assembly.

# Instrukcja

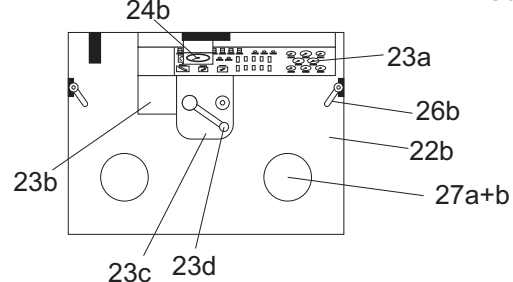
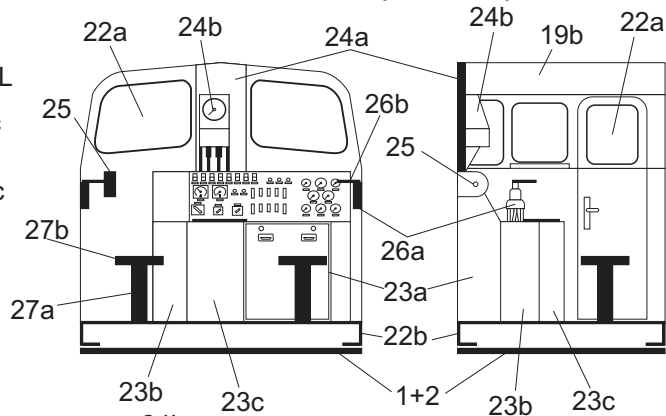


Zestawy kołowe (skala 1,5:1)



## Wnętrze kabiny

(skala 1,5:1)



## Elementy do wykonania z drutu

I - Ø1,00mm - 4szt.

II - Ø0,50mm - 2szt.

III - Ø0,25mm - 6szt.

IV - Ø0,25mm - 2szt.

V - Ø0,25mm - 2szt.

VI - Ø0,25mm - 2szt.

VII - Ø0,25mm - 2szt.

VIII - Ø0,25mm - 4szt.

IX - Ø0,25mm - 2szt.

X - Ø0,25mm - 1szt.

XI - Ø0,50mm - 4szt.

## Objaśnienia

\*<sup>b</sup> - podkleić brystolem

\* - podkleić kartonem 0,5mm

⊖ - zwinąć w wałek (widoczny tylko fragment zabarwiony)

⊖ - zwinąć ciasno

→ - kierunek zwijania

↺<sup>22a</sup> - część po wewnętrznej stronie